



S.C.A.N. & A.C.A.N.

Supporters of Children with Additional Needs and Additional Chairs for Additional Needs

January 2014

S.C.A.N. Year in Review

2013 was a year of changes for S.C.A.N. We moved out of our first office into a bigger space to open our S.C.A.N. Education & Activity Center. This was a goal our Founder, Terry Faust, from the beginning. It's not the gym she had in mind but we are still working toward that goal.

We continued our partnership with the Optimist to offer our athletic program which consisted bowling, gymnastics, & soccer camp.

We also continued our partnership with B&B Theaters in Lebanon for sensory movies. We had to discontinue the movies in Nixa & Waynesville, but B&B is aware of the need. They are attempting to have some special viewings on their own.

We continued to place chairs in local restaurants. We had an interview with Nathan Vickers from KOLR which spotlighted our ACAN program.

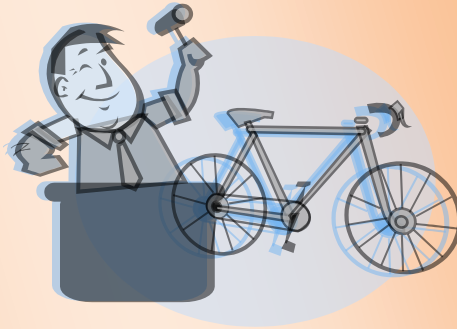
We continued our monthly support group meeting although the place has changed. We now hold them at the center. We continued our sibling support group, who had a blast ziplining at NRO.

We held our first Auction & Dance and have this year's set for June 21. Mark your calendars.

It's been a momentous year and we expect 2014 to be the same.

"All children are special, ours just have additional needs"

2nd Annual Auction/Dance Scheduled



Save the Date! June 21, 2014 4pm. We will have our live & silent auction followed by a dance with DJ Jim Daniels. Auctioneering will be done by Phipps Auction again this year.

If you attended last year, you know this event was very fun and we raised around \$5,000 for S.C.A.N. As with any event, there is a learning curve and the auction is no exception to the rule.

This year it will be on a Saturday and will start at 5pm. Doors open at 4. Admission is free! Concessions will be served! We hope to have more products and services this year **AND MORE TIME FOR DANCING!!**

If you have a special crafty talent, great cook, or own a business and would like to donate, Call the Center @ 991-2029 to make arrangements.

COME ENJOY THE FUN!

Upcoming Events

January 10-MPACT training: How to Write Measurable Goals

January 18-Music with Ms Leslie 10am

January 18-Parents' Night Out 6pm

January 25-Harlem Ambassadors vs RETT Warriors—tickets on sale at the Center

February 8-Sweetheart's Banquet, Bennett Room, 6pm, tickets on sale from board members or at the Center

Every Tuesday & Thursday- Mommy & Me 9:30-10:30 @ the Center \$5 per session or free with membership

April 12-Ribbon Run for Inclusion

June 21-2nd Annual Fundraising Auction & Dance

Be sure to check out our webpage www.scan4kids.com for more events and follow us on facebook activities as they become available.

Music Therapy

Haven't tried music therapy yet for your child? Why wait? We have one scheduled for this month.

Ms Leslie is awesome and tries to engage each child. She calls them by name and they practice taking turns, following directions and much more.



Raising Awareness! Focus on: Childhood Apraxia of Speech



Childhood apraxia of speech (CAS) is a motor speech disorder. Children with CAS have problems saying sounds, syllables, and words. This is not because of muscle weakness or paralysis. The brain has problems planning to move the body parts (e.g., lips, jaw, tongue) needed for speech. The child knows what he or she wants to say, but his/her brain has difficulty

muscle movements necessary to say those words.
SYMPTOMS INCLUDE: Does not coo or babble as an infant, First words are late, and they may be missing sounds, Only a few different consonant and vowel sounds, Problems combining sounds; may show long pauses between sounds, Simplifies words by replacing difficult sounds with easier ones or by deleting difficult sounds (although all children do this, the child with apraxia of speech does so more often), May have problems eating. In older children: Makes inconsistent sound errors that are not the result of immaturity, Can understand language much better than he or she can talk, Has difficulty imitating speech, but imitated speech is more clear than spontaneous speech, May appear to be groping when attempting to produce sounds or to coordinate the lips, tongue, and jaw for purposeful movement, Has more difficulty saying longer words or phrases

clearly than shorter ones, Appears to have more difficulty when he or she is anxious, Is hard to understand, especially for an unfamiliar listener, Sounds choppy, monotonous, or stresses the wrong syllable or word.

One of the most important things for the family to remember is that treatment of apraxia of speech takes time and commitment. Children with CAS need a supportive environment that helps them feel successful with communication. For children who also receive other services, such as physical or occupational therapy, families and professionals need to schedule services in a way that does not make the child too tired and unable to make the best use of therapy time.

Information from:
<http://www.asha.org/public/speech/disorders/childhoodapraxia/>



Happy January Birthdays!
 Maggie F. Jonathon W.
 Blake W. Elijah M.



SCAN Ribbon Run For Inclusion



Mark your calendars for April 12! (Rain date of April 19) S.C.A.N. will be holding its first ever Ribbon Run for Inclusion. The benefits from this Fun Run/Walk 5k will help with funding programs ran by S.C.A.N. These include our sibling support group; after school programs such as : Money Matter, Homework Swap, Garden Club, & Drama; and so much more throughout the year.

S.C.A.N. is an all-inclusive support group that does not discriminate based on diagnosis. We accept them all. We also do not discriminate based on age because cognitive age is what really matters. We strive to serve the whole family through our programs.

We believe that all children should have the chance to interact together because we can all learn from each other.

Inspiration's Corner

"Just because someone doesn't think the way you do, doesn't mean they are mindless. Just because someone can't talk, doesn't mean they have nothing to say. Just because someone has a lot of special needs, doesn't mean they have nothing to offer."

SINCE WE LAST SENT A NEWSLETTER . . .

Price Cutter in Lebanon has placed a Caroline's Cart in their store. This cart allows people with special needs to sit in comfort while shopping with their loved ones. Adults are also accommodated with this cart so caregivers of the elderly can use this cart.

