

# S.C.A.N Education & Activity Center

## Programs and Activities

Monthly Support Group Meetings 4<sup>th</sup> Monday of each month

679 W. Elm Street Suite 5, Lebanon 6:30-8:00 p.m.

Respite is available at Stringbeans Childcare

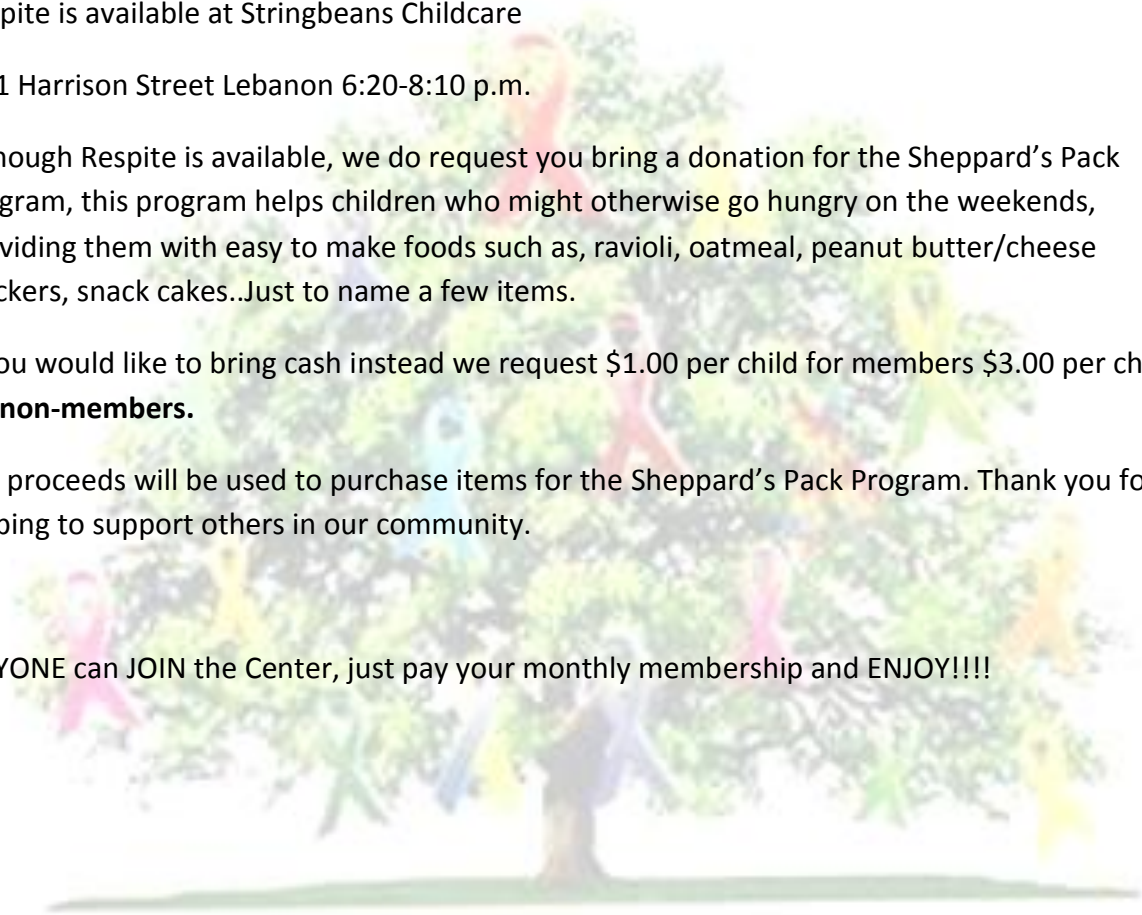
511 Harrison Street Lebanon 6:20-8:10 p.m.

Although Respite is available, we do request you bring a donation for the Sheppard's Pack Program, this program helps children who might otherwise go hungry on the weekends, providing them with easy to make foods such as, ravioli, oatmeal, peanut butter/cheese crackers, snack cakes..Just to name a few items.

If you would like to bring cash instead we request \$1.00 per child for members \$3.00 per child for **non-members**.

ALL proceeds will be used to purchase items for the Sheppard's Pack Program. Thank you for helping to support others in our community.

ANYONE can JOIN the Center, just pay your monthly membership and ENJOY!!!!



## **Free to Members ONLY**

**Sibling Support Group** is a safe caring environment to share feelings about what it's like to have a sibling with additional needs. SCAN Sibling Support Group occasionally ventures out for some fun activities such as bowling and to zipline. Most sessions will be offered at the SCAN Education & Activity Center. There is no extra cost to members for this program except the fees to participate in outside activities with the group. This program is overseen by Jerri Ann Shields.....titles....

**Drama Club** is designed to teach social skills thru fun activities such as dramatizations of real life events. Individuals will work on social and communication skills. Two areas of communications (acting) and listening (being an audience member) are very important in real life settings, as well as an educational setting. This program will allow individuals time to practice "appropriate" responses to a variety of situations. All will have the opportunity to discuss the social situation presented with guidance towards proper behaviors and responses.

**How do you do?** This program is designed to simulate real life situations where the opening may be "how do you do?" Open ended questions are often the most difficult for our children to respond to. There are no known word cues or concrete objects for them to relate to. Often our children encounter strangers in social situations, such as dining out, grocery shopping and have no idea what would be proper in response or gesture to an open ended abstract question. Repetition of these types of situations will help bring understanding to our children of what are socially acceptable answers to frequently asked questions and what facial expressions to use with each situation.

**S.C.A.N. Garden Club.** We have the opportunity to work the small patches of ground in front of the center. This program will teach hard work dedications and reward. Hard work to get the space ready, dedication to see the needs are met, and reward when the children see the flowers and plants thrive. This will give the individuals the opportunity to take pride in a job completed and to see the beauty around them. In the Spring the Garden Club will plant a garden to help raise foods for their families table 😊

**Homework Exchange**, this is parent and volunteer led program. We all know our children work better for someone else... So we offer the opportunity for parents to “trade” children to get the homework done with less stress for all involved. This plays to the parents strengths and gives the children the opportunity to use another parent as a resource. This will also allow the children to see a variety of learning/teaching techniques. We will offer this program starting twice weekly and expand as needed.

**Money Matters** Parent/volunteer program to teach the value of money and the concept of paying and working as a reward, earning money. What a wonderful way to teach real life applications of math, communications, and social studies. This 6 month program will be provided to a select few to allow more hands on teaching. While learning the participants will have the opportunity to “earn” money, while becoming a community member. The children will take turns each week being different community members, such as a banker, a grocer, a crafter, and a restaurateur. **The profits go to the banks 😊**



## Open to non-members at a fee

Programs at the SCAN Education & Activity Center are geared towards the additional needs children but many typical children can benefit as well, here are several opportunities for families in our community. With open Minds and Hearts, our children can learn to live together fostering inclusion for ALL.

**Mommy & Me** morning exercise sessions comprised to promote exercise and socialization to typical and additional needs children. **Non-members \$5.00 per session**

**Your Baby Can Read**, video session are to help provide those first words of recognition, promoting reading skills for when children start school. **Non Members \$5.00 per session**

## **Movie Night!!!**

**Teen & Up Movie Night**, for our older children to socialize and have a good time, typical or additional needs. Drinks and popcorn provided. This offers the opportunity for the older children to socialize in a safe environment. **Non members \$2.50 per child.**

**Little One Movie Night**, 3 years up to 10 years. Occasionally a movie will be provided for the younger children with popcorn, drinks, and movie **Non members \$2.50 per child.**

**Bowling at Starlite Lanes**, monthly first Sat @ 10 am. Starts Nov thru March (5 times) Members 2 games and shoes \$2.00 **Non members \$3.00** Fees for all sessions due in Nov , space is limited, this will reserve your child's spot

**Parents Night Out**, food fun and activities from 6 p.m.- 9 p.m. on a Friday night at the center This is available to our members for a fee of \$4.00 per child **Non Members \$8.00 per child**

